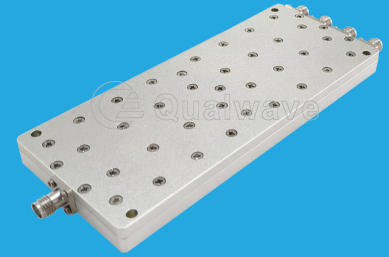


QPD4-1000-8000-K1-S

4-Way, 1~8GHz, 100W

Features:
 * Small Size
 * Low Insertion Loss

Applications:
 * Amplifiers
 * Mixers
 * Antennas
 * Laboratory Test



Electrical

Frequency:	1~8GHz
Insertion Loss ^{*1} :	1.3dB max.
Input VSWR:	1.4 max.
Output VSWR:	1.5 max.
Isolation:	20dB min.
Amplitude Balance:	±0.4dB
Phase Balance:	±5°
Impedance:	50Ω
Power @SUM Port:	100W max. as divider 100W max. as combiner

[1] Excluding theoretical loss 6.0dB.

Mechanical

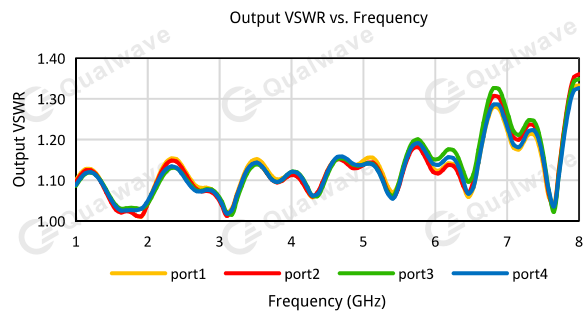
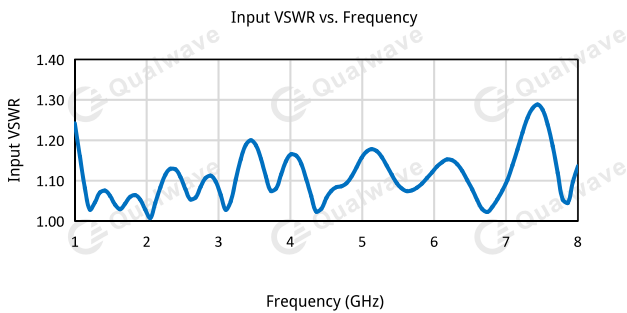
Size ^{*2} :	126*54*10mm 4.961*2.126*0.394in
Connectors:	SMA Female
Mounting:	4-Φ3.2mm through-hole

[2] Exclude connectors.

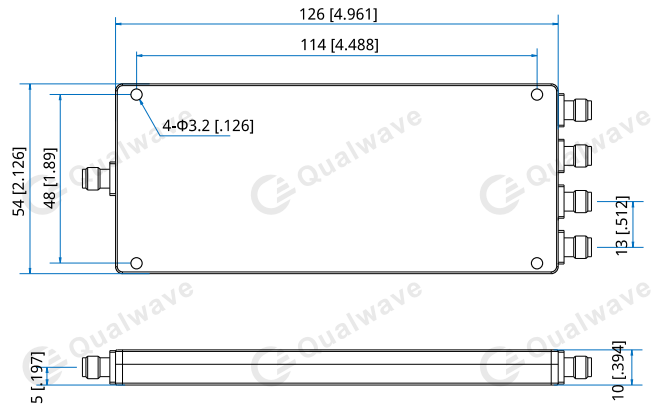
Environmental

Operation Temperature: -40~+85°C

Typical Performance Curves



Outline Drawings



Unit: mm [in]
 Tolerance: ±0.5mm [±0.02in]

How To Order

QPD4-1000-8000-K1-S

Customization is available upon request.

4-Way Power Divider/Combiner

