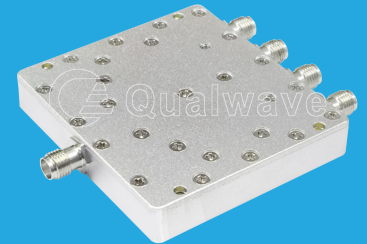


QPD4-8000-12000-30-S

4-Way, 8~12GHz

Features:
 * Small Size
 * Low Insertion Loss

Applications:
 * Amplifiers
 * Mixers
 * Antennas
 * Laboratory Test



Electrical

Frequency:	8~12GHz
Insertion Loss ^{*1} :	1.0dB max.
VSWR:	1.3 max.
Isolation:	18dB min.
Amplitude Balance:	±0.4dB
Phase Balance:	±5°
Impedance:	50Ω
Power @SUM Port:	30W max. as divider 2W max. as combiner

[1] Excluding theoretical loss 6.0dB.

Mechanical

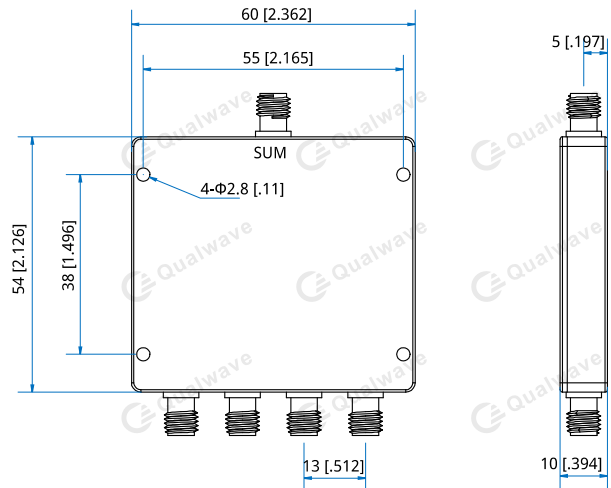
Size ^{*2} :	54*60*10mm 2.126*2.362*0.394in
Connectors:	SMA Female
Mounting:	4-Φ2.8mm through-hole

[2] Exclude connectors.

Environmental

Operation Temperature: -45~+85°C

Outline Drawings



Unit: mm [in]
 Tolerance: ±0.5mm [±0.02in]

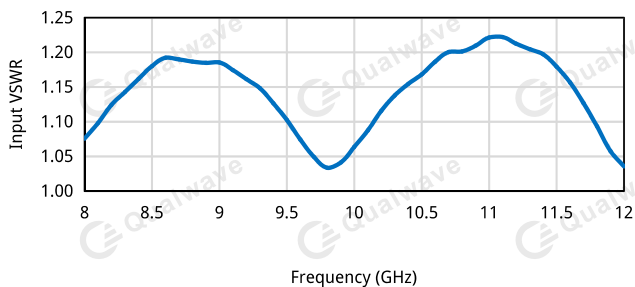
How To Order

QPD4-8000-12000-30-S

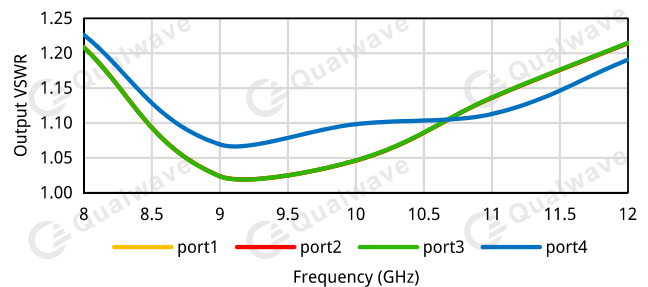
Customization is available upon request.

Typical Performance Curves

Input VSWR vs. Frequency

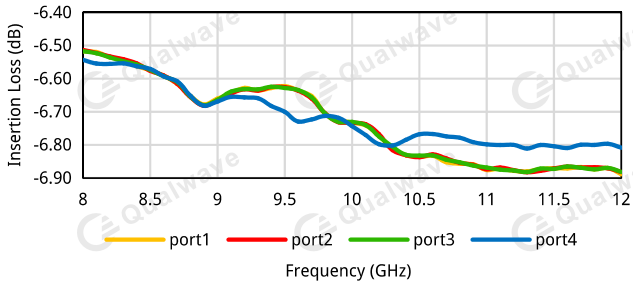


Output VSWR vs. Frequency

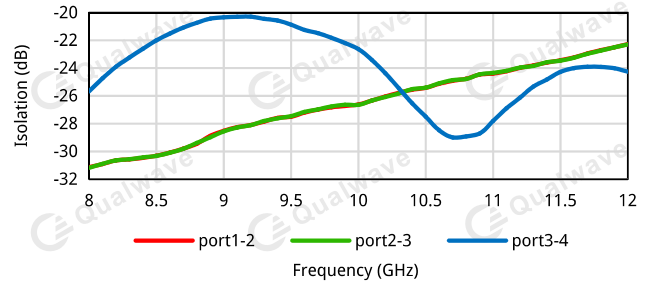


4-Way Power Divider/Combiner

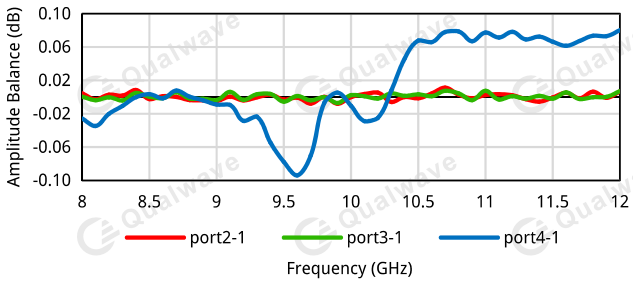
Insertion Loss vs. Frequency



Isolation vs. Frequency



Amplitude Balance vs. Frequency



Phase Balance vs. Frequency

