

QWC-32000-36000-K2

32~36GHz

Features:
 * Broadband
 * High Power
 * Low Insertion Loss

Applications:
 * Wireless
 * Radar
 * Laboratory Test

Electrical

Frequency:	32~36GHz
Insertion Loss:	0.5dB max.
Isolation:	20dB min.
VSWR:	1.25 max.
Power Handling:	200W (Verification with the whole machine)

Mechanical

Interface:	WR-28 (BJ320)
Flange:	FBP320
Material:	Copper
Finish:	Silver plating
Coating:	Sea gray

Environmental

Operating Temperature:	-20~+70°C
Non-operating Temperature:	-40~+70°C (80% RH max.)

How To Order

QWC-32000-36000-K2-Y-Z

Y : Material

Z : Flange type

Material naming rules:

C - Copper (Outline A)

Flange naming rules:

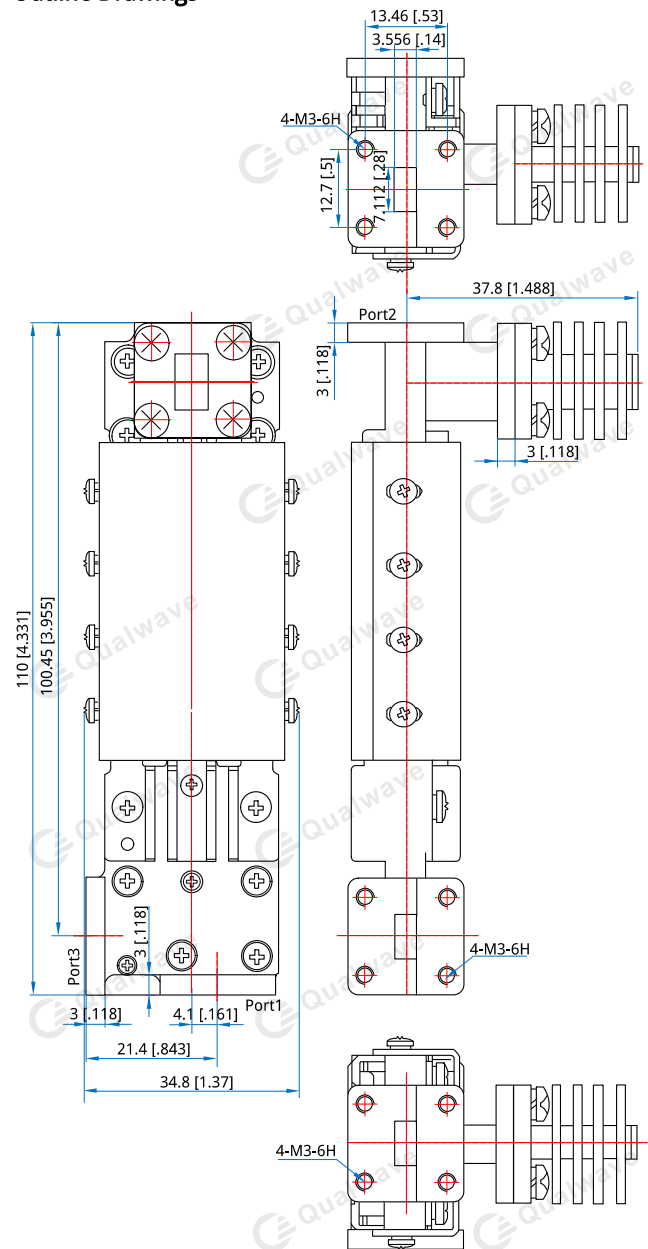
1 - FBP (Outline A)

Examples:

To order a Waveguide Circulator, 32~36GHz, 200W, Copper, FBP320, specify QWC-32000-36000-K2-C-1.

Customization is available upon request.

Outline Drawings



Outline A

Unit: mm [in]

Tolerance: ±0.5mm [±0.02in]