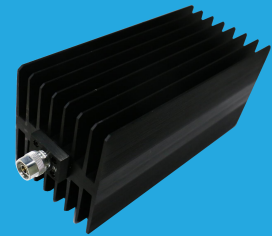


# QCT18K25

## DC~18GHz, 250W

Features:  
 \* Low VSWR  
 \* Broadband

Applications:  
 \* Transmitters  
 \* Antennas  
 \* Laboratory Test  
 \* Impedance Matching



### Electrical

Frequency Range: DC~18GHz  
 Average Power\*1: 250W@25°C  
 Impedance: 50Ω  
 Peak Power: 5KW (5μS pulse width, 2.5% duty cycle) @DC~12.4GHz  
 1KW (5μS pulse width, 12.5% duty cycle) @18GHz

[1] Derated linearly to 12.5W@120°C.

### VSWR

Frequency (GHz)	VSWR (max.)
DC~4	1.2
DC~8	1.25
DC~12.4	1.35
DC~18	1.45

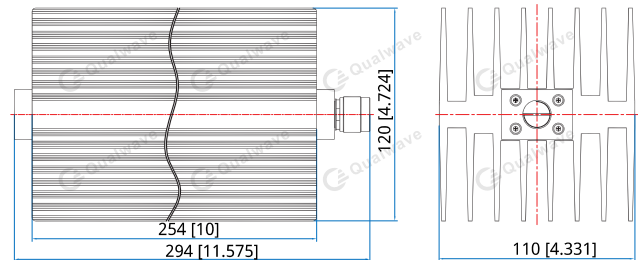
### Mechanical

Size: 294\*110\*120mm  
 11.575\*4.331\*4.724in  
 Connector: N

### Environmental

Temperature: -55~+125°C

### Outline Drawings



Unit: mm [in]  
 Tolerance: ±1mm [±0.04in]

### How To Order

**QCT18K25-X-Y**

X: Frequency in GHz

Y: Connector type

Connector naming rules:

N - N Male

NF - N Female

Examples:

To order a termination, DC-18GHz, N male, specify QCT18K25-18-N

Customization is available upon request.