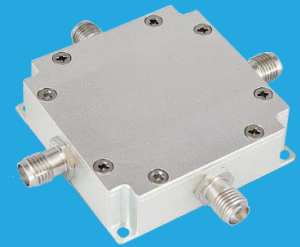


QIMA-MP2-BT-10-2150

0.01~2.15GHz

Features:
 * High Isolation
 * Low VSWR

Applications:
 * Wireless
 * Receiver
 * Laboratory Test
 * Communication



Description

QIMA-MP2-BT-10-2150 is an integrated microwave assembly which combines a 10~50MHz signal usually as clock input, 950~2150MHz signal and DC supply.

Electrical

Frequency (CLK):	10~50MHz
(RF):	950~2150MHz
(DC):	DC
Insertion Loss (RF):	0.8dB max.
(CLK):	0.5dB max.
Isolation:	40dB min.
VSWR (CLK):	1.25 max.
(RF):	1.5 max.
(SUM):	1.4 max.
	@10~50MHz&950~2150MHz
Impedance:	50Ω
Supply Voltage:	50V DC max.
Current:	2.5A max.

Absolute Maximum Ratings*1

RF Input Power:	30dBm
Voltage:	72V

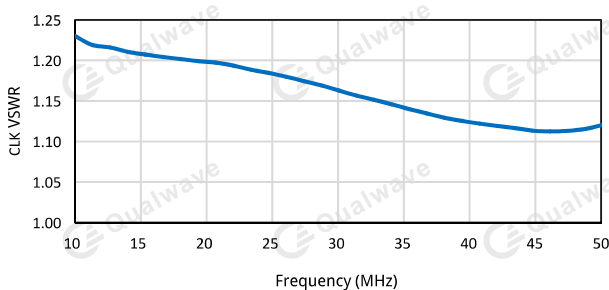
[1] Permanent damage may occur if any of these limits are exceeded.

Mechanical

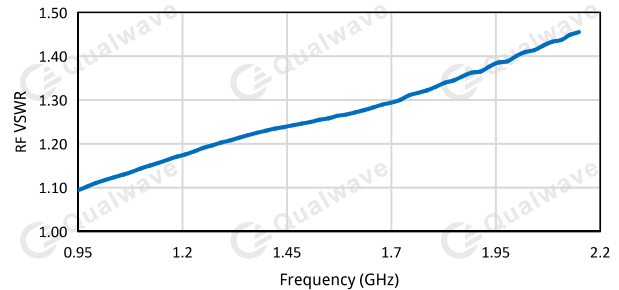
Size*1:	42*42*12mm
	1.654*1.654*0.472in

Typical Performance Curves

CLK VSWR vs. Frequency



RF VSWR vs. Frequency



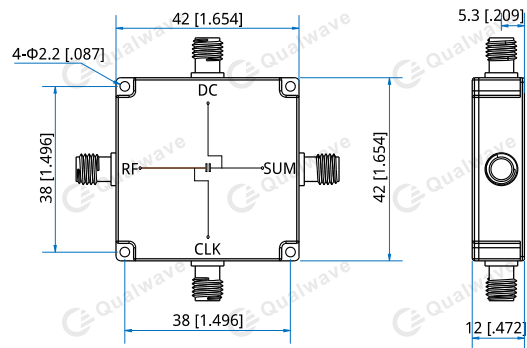
Connector: SMA Female

[1] Exclude connectors.

Environmental

Operating Temperature:	-35~+75°C
Non-operating Temperature:	-45~+85°C

Outline Drawings



Unit: mm [in]

Tolerance: ±0.5mm [±0.02in]

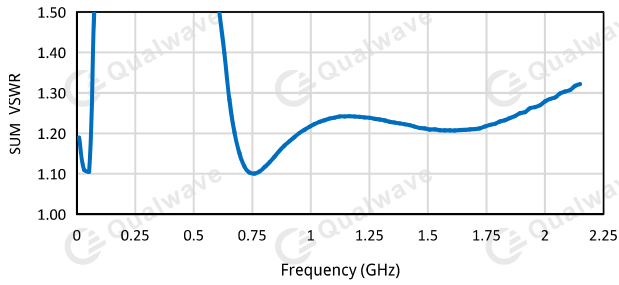
How To Order

QIMA-MP2-BT-10-2150

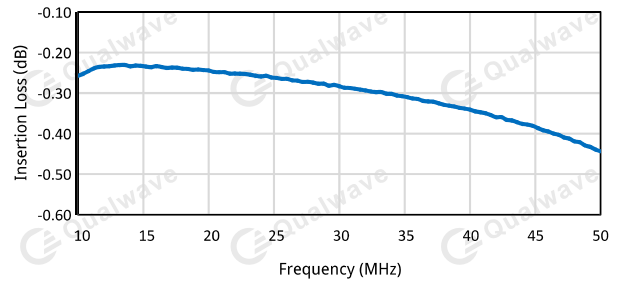
Customization is available upon request.

Integrated Microwave Assemblies

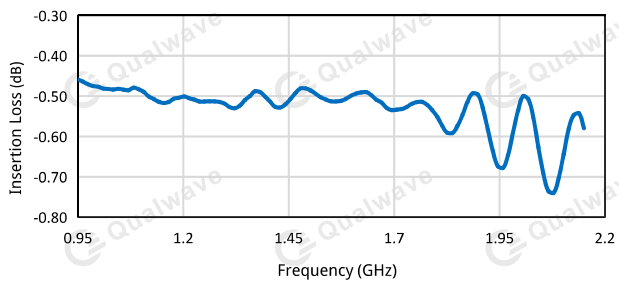
SUM VSWR vs. Frequency



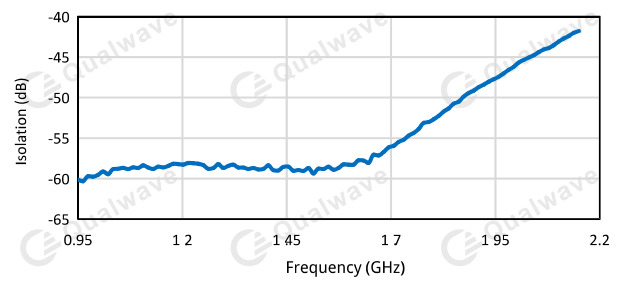
CLK-SUM Insertion Loss vs. Frequency



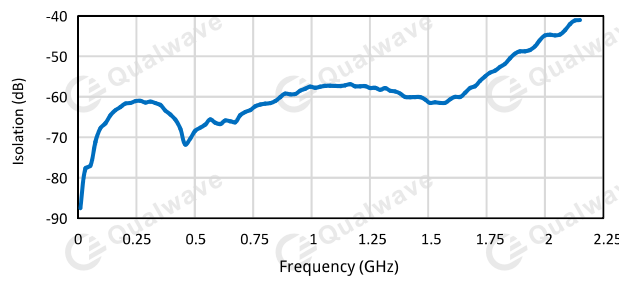
RF-SUM Insertion Loss vs. Frequency



CLK-SUM Isolation vs. Frequency



RF-CLK Isolation vs. Frequency



RF-SUM Isolation vs. Frequency

