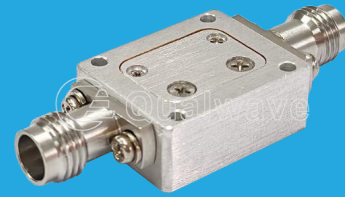


QLA-14000-50000-20-30

14~50GHz, 20dB, 3.0dB

Features:
 * Broadband
 * Low Noise

Applications:
 * Wireless
 * Receiver
 * Laboratory Test
 * Radar



Electrical

Frequency:	14~50GHz
Small Signal Gain:	20dB typ.
Gain Flatness:	±2dB typ.
Output Power (P1dB):	16dBm typ.
Noise Figure:	3.0dB typ.
Spurious:	-60dBc max.
Reverse Isolation:	-40dB typ.
VSWR:	2 typ.
Voltage:	+4.5V DC
Current:	100mA typ.
Impedance:	50Ω

Absolute Maximum Ratings*1

RF Input Power:	+17dBm
Voltage:	+4.7V

[1] Permanent damage may occur if any of these limits are exceeded.

Mechanical

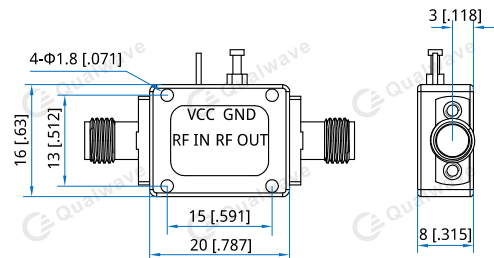
Size*2:	20*16*8mm 0.787*0.63*0.315in
RF Connectors:	2.4mm Female (Removable)
Mounting:	4-Φ1.8mm through-hole

[2] Exclude connectors.

Environmental

Operating Temperature:	-45~+85°C
Non-operating Temperature:	-55~+125°C

Outline Drawings



Unit: mm [in]
 Tolerance: ±0.5mm [±0.02in]

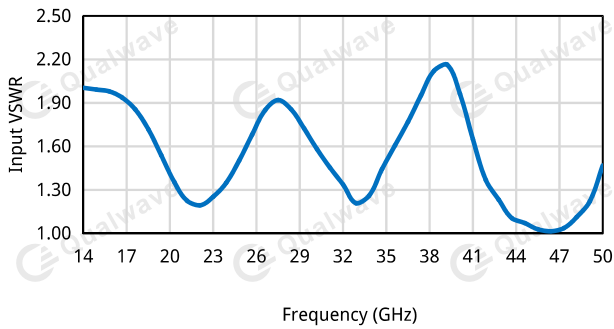
How To Order

QLA-14000-50000-20-30

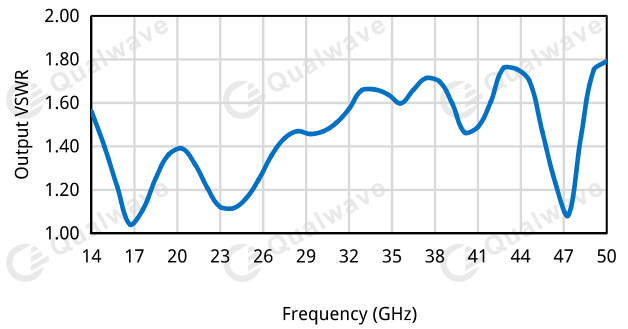
Customization is available upon request.

Typical Performance Curves

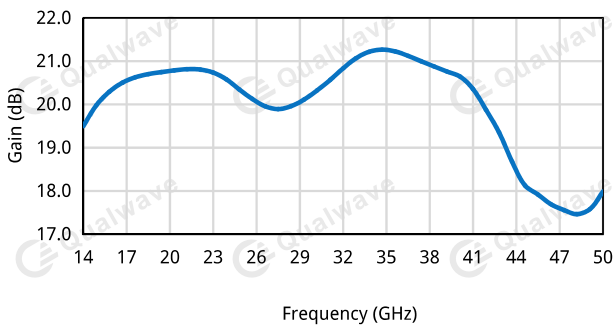
Input VSWR vs. Frequency



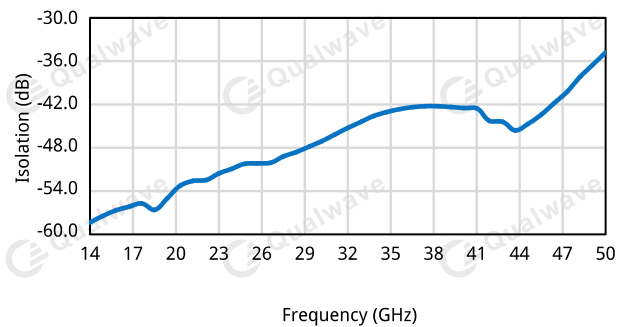
Output VSWR vs. Frequency



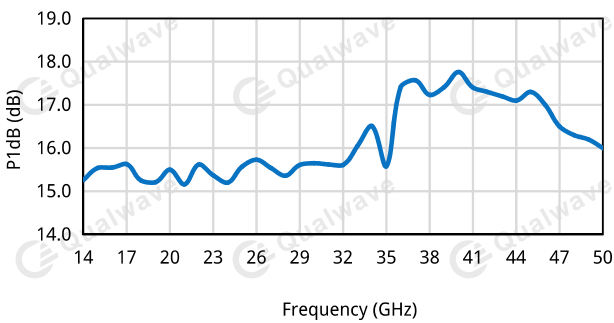
Gain vs. Frequency



Isolation vs. Frequency



P1dB vs. Frequency



Noise Figure vs. Frequency

