

# QCGS-MO-M

## SSMP Connector, DC~45GHz

Features:  
\* Low VSWR

Applications:  
\* Wireless  
\* Radar  
\* Instruments  
\* Electronics

### Electrical

Frequency: DC~45GHz  
Impedance of Dielectric: 1000MΩ (500V DC) min.  
Voltage Withstand\*1: 325V  
Impedance: 50Ω

[1] 50Hz, AC RMS, at sea level.

### Environmental

Temperature: -65~+165°C  
Seal: 1.013\*10<sup>-3</sup> Pa.cm<sup>3</sup>/s (He) max.  
Salt Fog\*2: 48h min.

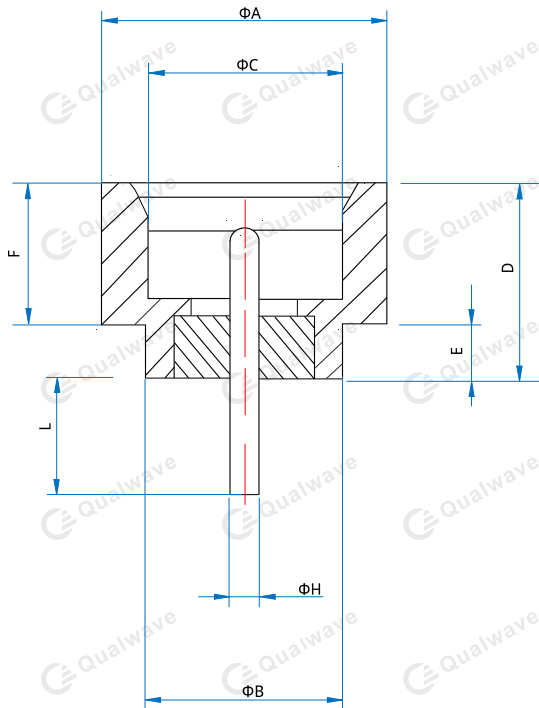
[2] According to customer requirements, it can reach 96 hours.

### Mechanical

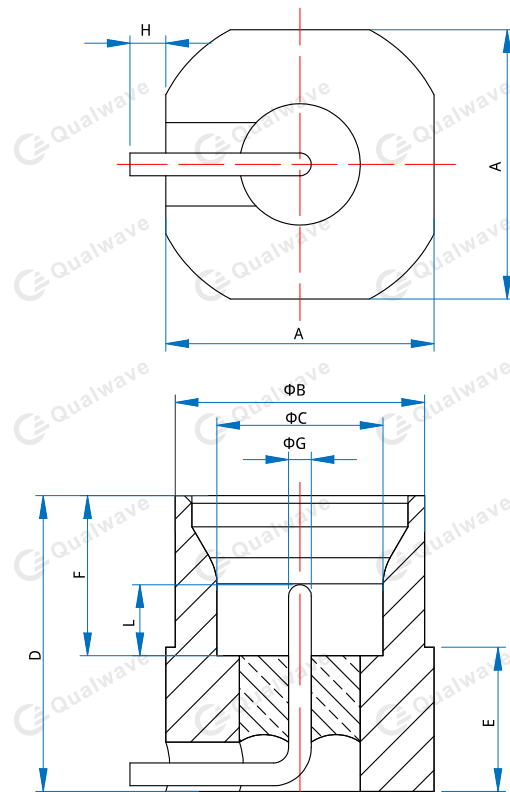
RF Connector\*3: SSMP male  
Mating Life Cycle: 500 cycles  
Detent Mode: Smooth bore  
Outer Conductor: Gold-plated and nickel-plated kovar alloy (4J29)  
Dielectric: Glass  
Inner Conductor: Gold-plated and nickel-plated kovar alloy (4J29)

[3] Mateable with GPP0, SMPM & Mini-SMP.

### Outline Drawings



Outline A



Outline B

Unit: mm [in]

Tolerance: ±0.2mm [±0.008in]

Part Number	A	B	C	D	E	F	G	H	L	Outline Drawings
QCGS-MO-M30-01	3.2 [.126]	2.2 [.087]	2.2 [.087]	2.2 [.087]	0.6 [.024]	1.3 [.051]	-	0.3 [.012]	1.3 [.051]	Outline A
QCGS-MO-M30-02	3.3 [.13]	2.18 [.086]	2.2 [.087]	3.58 [.141]	1.27 [.05]	2.11 [.083]	-	0.3 [.012]	1.9 [.075]	Outline A
QCGS-MO-M30-03	3.3 [.13]	2.18 [.086]	2.2 [.087]	3.58 [.141]	1.27 [.05]	2.11 [.083]	-	0.3 [.012]	0.76 [.03]	Outline A
QCGS-MO-M30-04	3.2 [.126]	2.2 [.087]	2.2 [.087]	3.5 [.138]	0.8 [.031]	2.1 [.083]	-	0.3 [.012]	1 [.039]	Outline A
QCGS-MO-M30-05	3.3 [.13]	2.18 [.086]	2.2 [.087]	3.1 [.122]	0.8 [.031]	2.11 [.083]	-	0.3 [.012]	1.5 [.059]	Outline A
QCGS-MO-M30-06	3.2 [.126]	2.8 [.11]	2.2 [.087]	2.2 [.087]	1.7 [.067]	1.5 [.059]	-	0.3 [.012]	0.6 [.024]	Outline A
QCGS-MO-M30-07	3 [.118]	2.2 [.087]	2.2 [.087]	3.2 [.126]	1.3 [.051]	1.7 [.067]	-	0.3 [.012]	1.5 [.059]	Outline A
QCGS-MO-M30-08	3.3 [.13]	2.2 [.087]	2.21 [.087]	3.6 [.142]	1.3 [.051]	1.7 [.067]	-	0.3 [.012]	5.5 [.217]	Outline A
QCGS-MO-M30-09	3.3 [.13]	2.18 [.086]	2.21 [.087]	3.11 [.122]	0.8 [.031]	2.11 [.083]	-	0.3 [.012]	1.5 [.059]	Outline A
QCGS-MO-M30-10	3.2 [.126]	2.2 [.087]	2.2 [.087]	3.58 [.141]	1.28 [.05]	2.11 [.083]	-	0.3 [.012]	0.7 [.028]	Outline A
QCGS-MO-M30-11	3.5 [.138]	2.2 [.087]	2.13 [.084]	2.2 [.087]	0.6 [.024]	1.4 [.055]	-	0.3 [.012]	1.8 [.071]	Outline A
QCGS-MO-M30-12	3.3 [.13]	2.18 [.086]	2.21 [.087]	3.58 [.141]	1.27 [.05]	2.11 [.083]	-	0.3 [.012]	1.93 [.076]	Outline A
QCGS-MO-M30-13	3 [.118]	2.18 [.086]	2.2 [.087]	4.7 [.185]	1.3 [.051]	1.7 [.067]	-	0.3 [.012]	1.8 [.071]	Outline A
QCGS-MO-M30-14	3.55 [.14]	3.3 [.13]	2.2 [.087]	3.9 [.154]	1.9 [.075]	2.11 [.083]	0.3 [.012]	0.5 [.02]	0.94 [.037]	Outline B